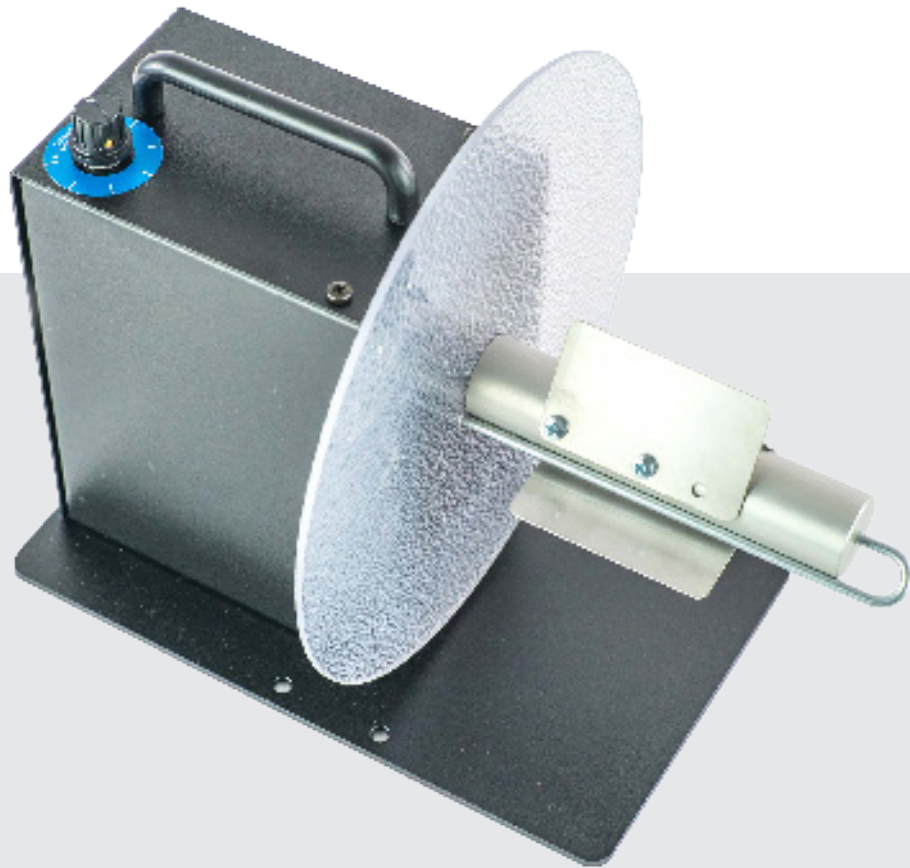




labelmate

THE WORLD'S LEADING MANUFACTURER OF LABEL DISPENSERS, REWINDERS, UNWINDERS & COUNTING SOLUTIONS



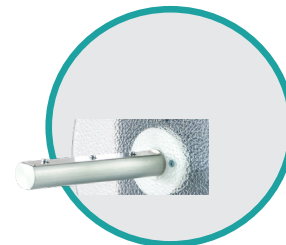
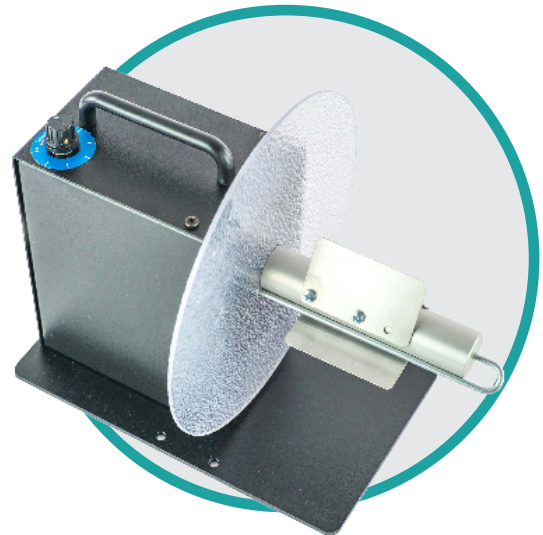
MC-10 & MC10+

labelmate.com

MINI-CAT Rewinders

The MINI-CAT rewinders are the world's most popular entry-level label rewinders to be used in combination with small desktop or mid-range barcode printers. With a specially designed bi-directional motor, they offer trouble-free performance at an incredible low cost.

- ✓ Small footprint to fit on any desk
- ✓ Easy setup: attach the labels to the take-up core and ready to start
- ✓ Speed up to 50cm/sec to work with desktop or mid-range barcode printers
- ✓ Bi-Directional
- ✓ Large capacity for roll diameters up to 220mm
- ✓ Adjust the rewind force with a



1-INCH

FEATURES

- Maximum Label Roll Weight: 4 KG
- Maximum Roll Diameter: 220 mm
- Maximum Speed: 50 CM/SEC at the beginning of a 76 mm core roll
- An external command interface on the '+' models to support direct control start/stop by the barcode printer (check compatibility with your printer vendor). The MC+ can react to different types of signals provided by the printer. Selection of the signal nature is done via 2 jumpers on the internal PCB. Four modes selectable: Open Collector High Active, Open Collector Low, Logic Level High (MAX10VDC) & Logic Level Low (MAX10VDC). Factory setting is "Open Collector High", other settings on request.

DIMENSIONS

- W x D x H: 220 x 305 x 195 mm
- Shipping Weight: 6 to 8 KG depending on model & selected options

MINI-CAT-MODELS

| P/N | MODEL | DESCRIPTION | MAX LABEL WIDTH |
|--------|---------------|--|-----------------|
| LMR001 | MC-10 | Standard for rewinding on cores 76mm. On request for core diameters 38/40/44/50/70/100 mm. | 125 mm |
| LMR002 | MC-10-1-INCH | Standard for rewinding on cores 25,4 mm | 125 mm |
| LMR030 | MC-10+ | Including External Control. Standard for rewinding on cores 76mm. On request for core diameters 38/40/44/50/70/100 mm. | 125 mm |
| LMR031 | MC-10+-1-INCH | Including External Control. Standard for rewinding on cores 25,4 mm | 125 mm |

MINI-CAT-OPTIONS

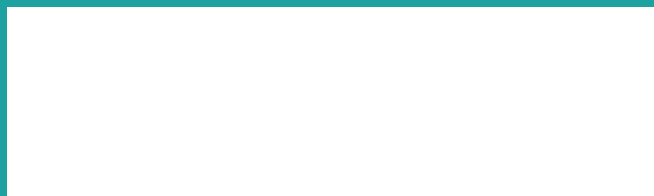
| P/N | MODEL | DESCRIPTION |
|--------|-------------------|--|
| LMX441 | APG-MC | Adjustable Paper Guide. Guides outer edge of label to ensure an even roll edge. |
| LMX440 | EXT. FLANGE-MC-10 | External Flange for MC-10 & MC-10+. Diam.220 mm. |
| LMX442 | STANDARD SHAFT MC | Standard shaft for MC with vanes, bail & internal flange |
| LMX443 | ACH-MC | Adjustable Core Holder for rewinding on cores between 25 and 101 mm diameter. With inner flange. |
| LMX162 | BAIL-MC | Standard on MC-10 & MC-10+. For rewinding on the shaft without using an empty core (coreless) |

GENERAL

- Power Supply: 15VDC 1600mA
- Limited Warranty of 5 Years, 1 Year on the Power Supply



Your local partner:



+32 2 375 69 60

brussels@labelmate.com

Bergensesteenweg 78
1651 Lot (Belgium)

www.labelmate.com